

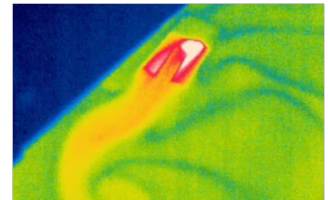
PHD SEMINAR



23/06/2017 - 16H - CONF ROOM

Thomas Dutour

Sun-boats are interfacial vessels propelled thanks to a surface tension difference between its bow and its stern. This surface tension gradient is tied to a temperature gradient generated by solar...or LED radiation. Contrary to soap-boats, those vessels have been rarely studied. I set an experimental system up to study their performance in a permanent regime.



Claire Shune

Laminated glass is commonly used nowadays for its high resistance to impacts. It is comprised of an elastomeric layer in between two glass plates, which undergoes temperature and pressure cycles. The industrial process is still very empirical and the nucleation and growth of bubbles in the polymer layer has not been studied in details. An experimental system has been built to image our samples during the p and T cycles and reveals interesting behaviors, that I will present.